



# Metis

## Electricity Meter Reading Android Application

### HOW TO INSTALL

Date:  
Jun 2021



German Metring GmbH  
[www.german-metering.com](http://www.german-metering.com)

Address:  
German Metering GmbH  
Reuterweg 65  
D-60323 Frankfurt am Main  
Germany

Tel.: +49 (0) 69 / 770 622 - 06  
Fax: +49 (0) 69 / 770 622 - 05

# Index

1	Requirements .....	2
2	Installing application .....	2
3	Authorization.....	3
4	Registering.....	3
5	Installing AccessDatabaseEngine .....	4
6	Before you begin .....	8
6.1	Download data from android device .....	9



Thank you for purchasing Metis android application, this manual explains the instruction for installing this product. Read this manual before installing your Metis android application.

# 1 Requirements

You'll need at least Android 4 or newer and API Level 15 or higher to install this product.

# 2 Installing application

To install this product on your android device, follow steps below:

**Step 1:** Copy the APK file named "Metis.apk" on your internal storage (device storage) (figure 1).

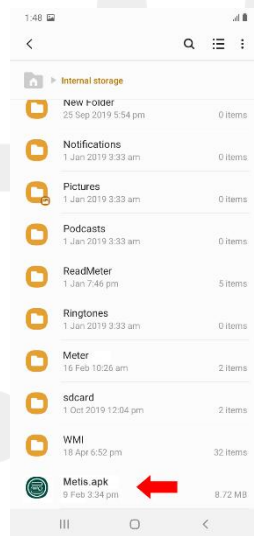


Figure 1 - copy file on your device storage

**Step 2:** Open it and tap on "Install" (number 1 on figure 2).

**Step3:** Tap on run when installation finished (number 2 on figure 2).

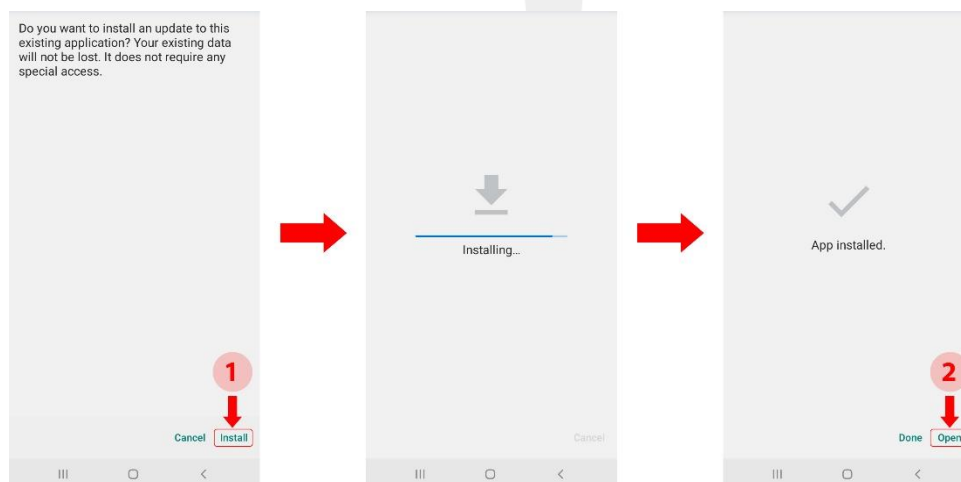


Figure 2 - install and open

## 3 Authorization

After opening the application for the first time, the request for authorization is requested from user for the following items (figure 3):

1. Make and manage phone calls
2. Take pictures and record video
3. Device's location
4. Access photos, media, and files on your device
5. Record audio

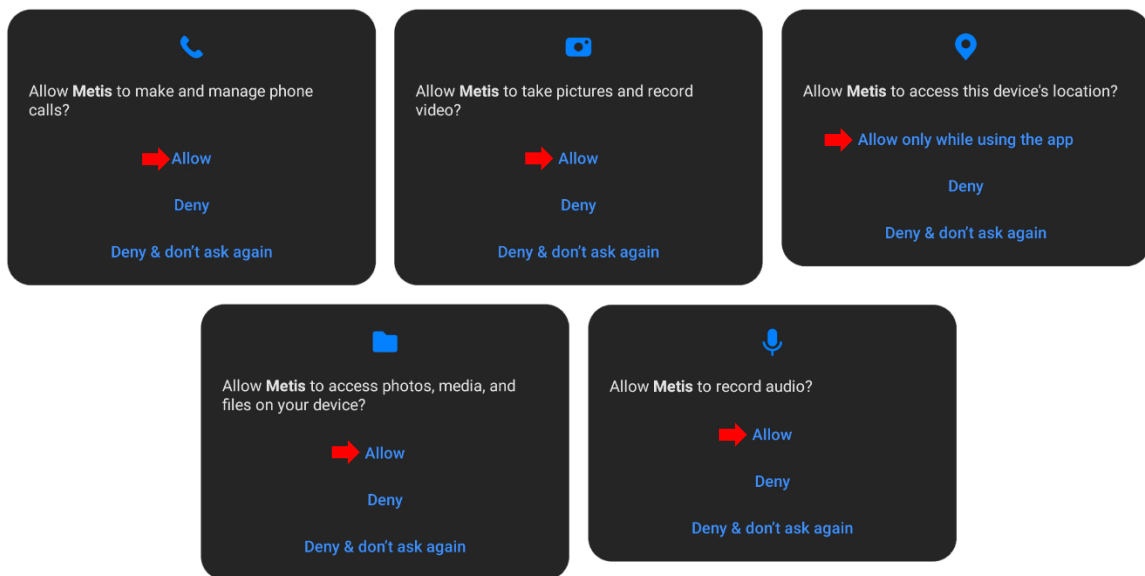


Figure 3

## 4 Registering

This application has a secure and safe registration process, follow steps below:

**Step 1:** When you run the application for the first time, activation page displayed (figure 4)

**Step 2:** Send us the green serial number (IMEI code) (number 1 on figure 4)

**Step 3:** We send activation code for you, enter it in "Software Code" box (number 2 on figure 4)

**Step 4:** Tap on green button "ACCEPT ACTIVATION KEY" (number 3 on figure 4)

**Note1:** You need to be connected to the internet while activation progress

**Note2:** This activation code doesn't work on another device

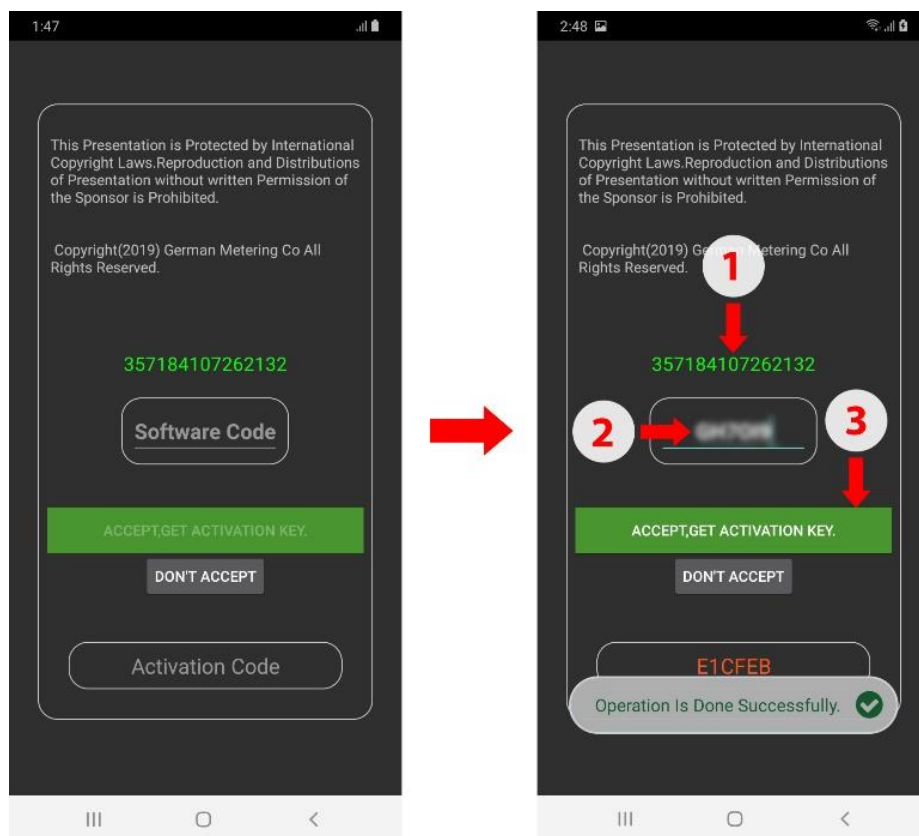


Figure 4 - activation page

Your application successfully installed and activated.

## 5 Installing AccessDatabaseEngine

First you need to install "AccessDatabaseEngine" in your pc. follow steps below:

**Step 1:** Run "AccessDatabaseEngine.exe".

**Step 2:** Click on "Next"

**Step 3:** Check "I accept the terms in the License Agreement" and click on "Next" (figure 5).

**Step 4:** Click on "Install" (figure 6).

**Step 5:** After successful installation a message will be shown, click on "OK" (figure 7).

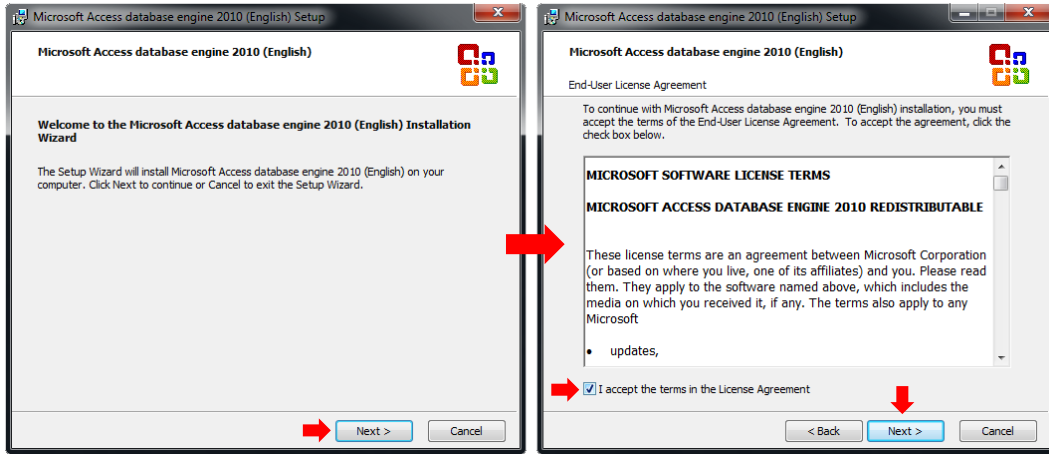


Figure 5

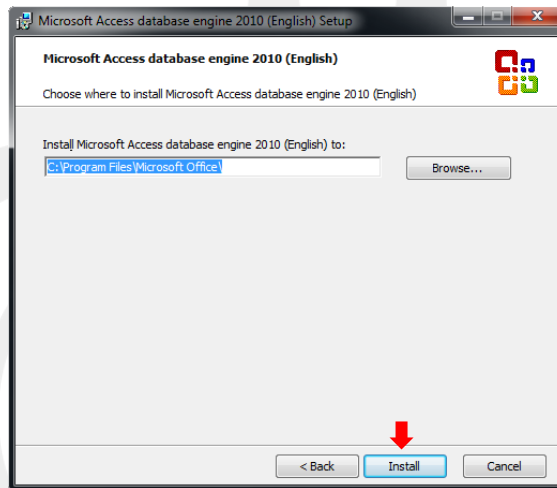


Figure 6

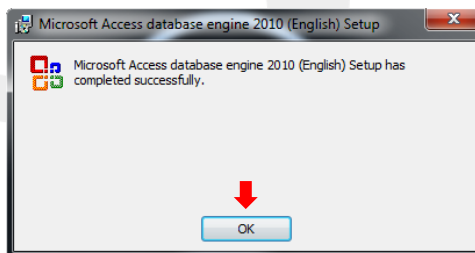


Figure 7

In next step, open the "Settings" in your Android Device (Figure 8) and follow steps below:

**Step 1:** Go to the "About Device" (Figure 9).

**Step 2:** Go to the "Software info" (Figure 9).

**Step 3:** Tap on "Build number" 7 times continuously (Figure 9)

**Note:** It's in "About Device" root menu in older android versions. Also, you can search "Build number" to find it.



**Step 4:** A message will be shown and developer mode will be activated.

**Step 5:** Go back to the “Settings”

**Step 6:** In bottom of settings a new item “Developer options” is added, tap on it (Figure 10).

**Step 7:** Active “USB debugging” if it’s not (Figure 10).

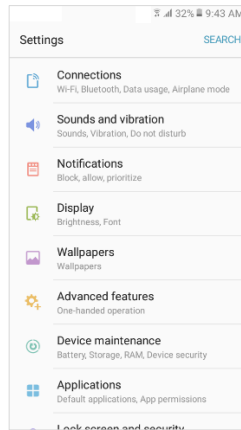


Figure 8 – Android 10 Device Settings

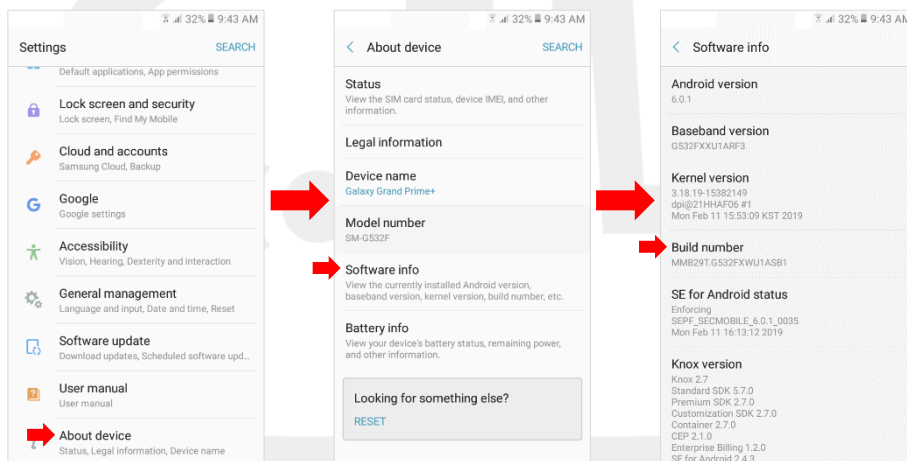


Figure 9

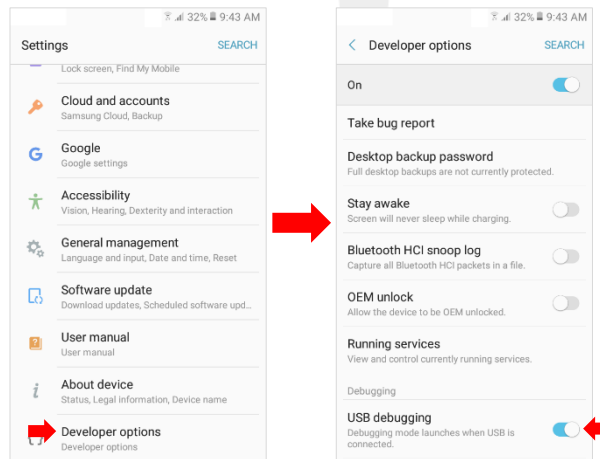


Figure 10

Now you can connect your Android Device via USB cable to the pc (If the following popup message appeared on your screen, tap the "Always allow from this computer" checkbox and tap the "Allow" button. (figure 11)) and follow steps below:

**Step 1:** Run "ADB Installer" software (included in the package).

**Step 2:** Your device manufacture will be shown, click on "Install" (figure 12).

**Step 3:** A windows security message will be shown and warn you about installing the driver, click on "Install this driver software anyway" (figure 13)

**Step 4:** After successful installation, "Device Status" will be change to "OK" (figure 14).

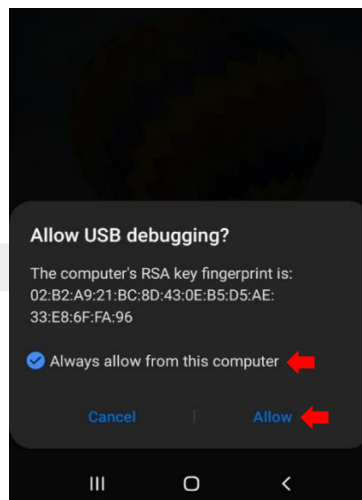


Figure 11

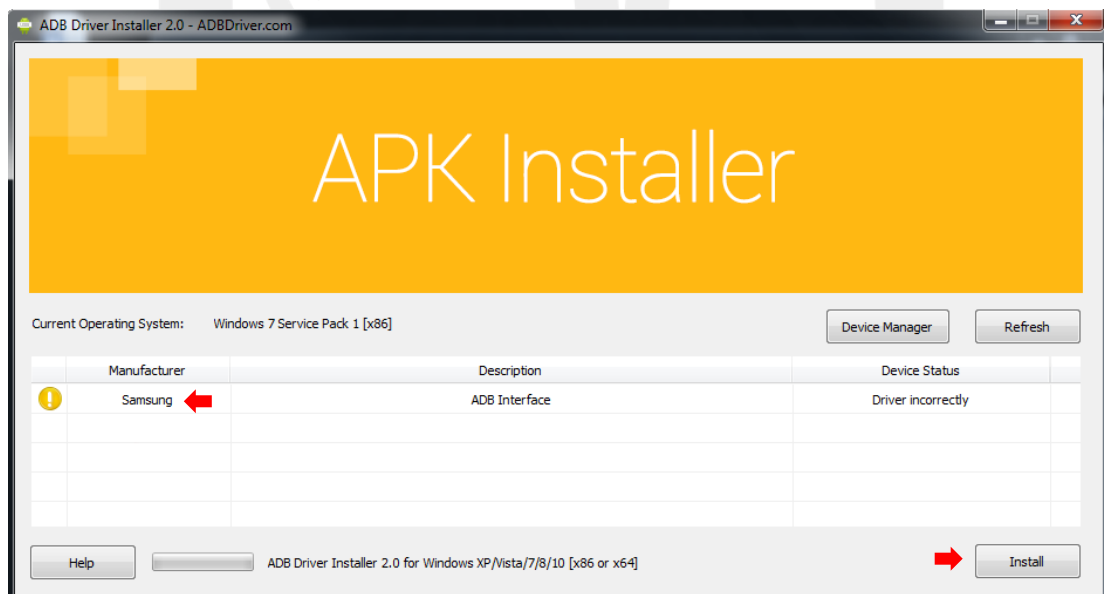


Figure 12



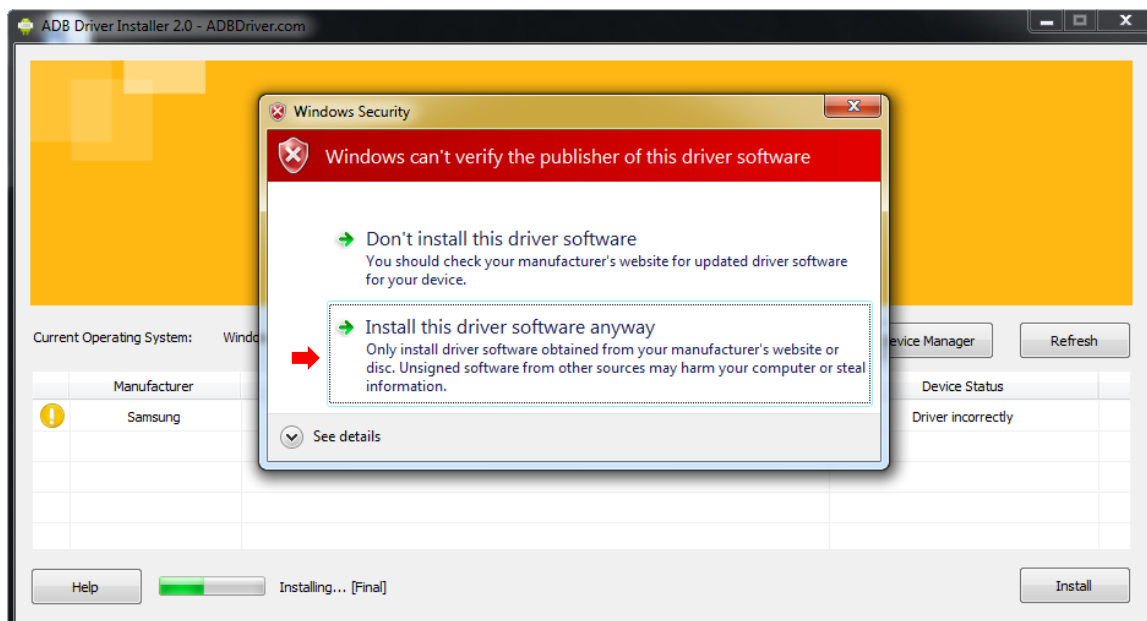


Figure 13

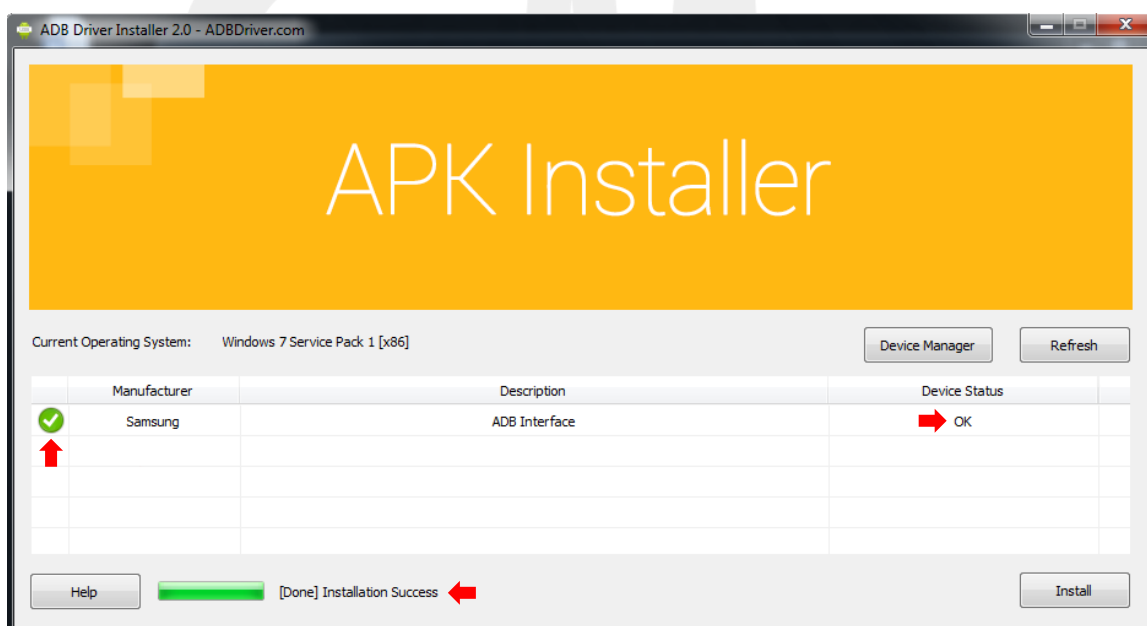


Figure 14

## 6 Before you begin

Before running this application on your device, we need to send some data to your device.

In the software package run "ExcelToJson.exe" windows application, this software sends the file en\_data.xlsx data to the device, also downloading and viewing the reading data of the meters from your device is done by this software, follow steps below:

**Step 1:** Run Software “ExcelToJson.exe” and click on brows button (figure 15).

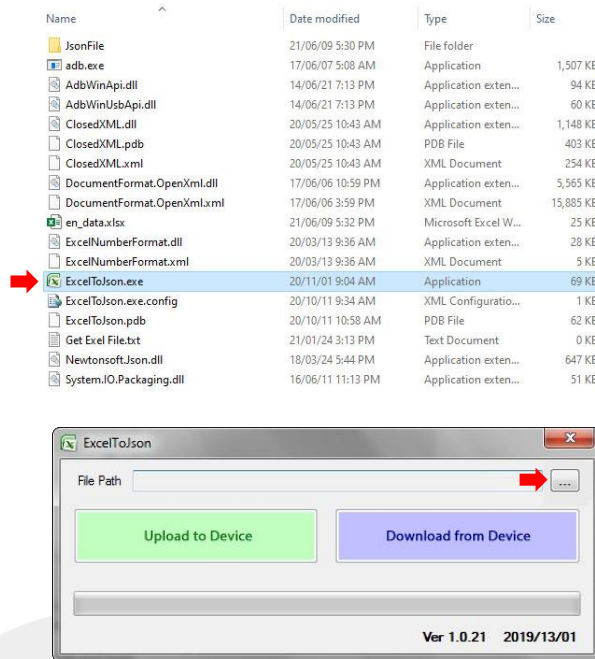


Figure 15

**Step 2:** Select Excel file from your pc (figure 16).

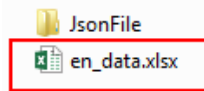


Figure 16

**Step 3:** Click on “Upload to Device” and wait until process finished (figure 17).

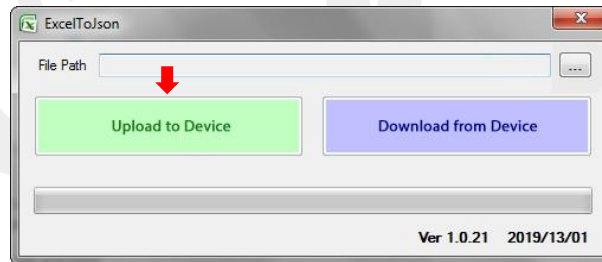


Figure 17

Everything is ready to use your application now.

**Note:** If necessary, you can delete the data in the excel file and provide the information you want, but do not change the formatting of the fields and the filename.

## 6.1 Download data from android device

In order to transfer data from device to pc after data collection, connect the device via USB cable and follow steps below:

**Step 1:** Run Software “ExcelToJson.exe” and click on brows button (figure 18).

**Step 2:** Select Excel file from your pc (figure 18).

**Step 3:** Click on “Download from Device” and wait until process finished.



Figure 18

The data on the android device will be transferred to the pc and will be inserted into the excel file in a new sheet by the name "new\_values".

